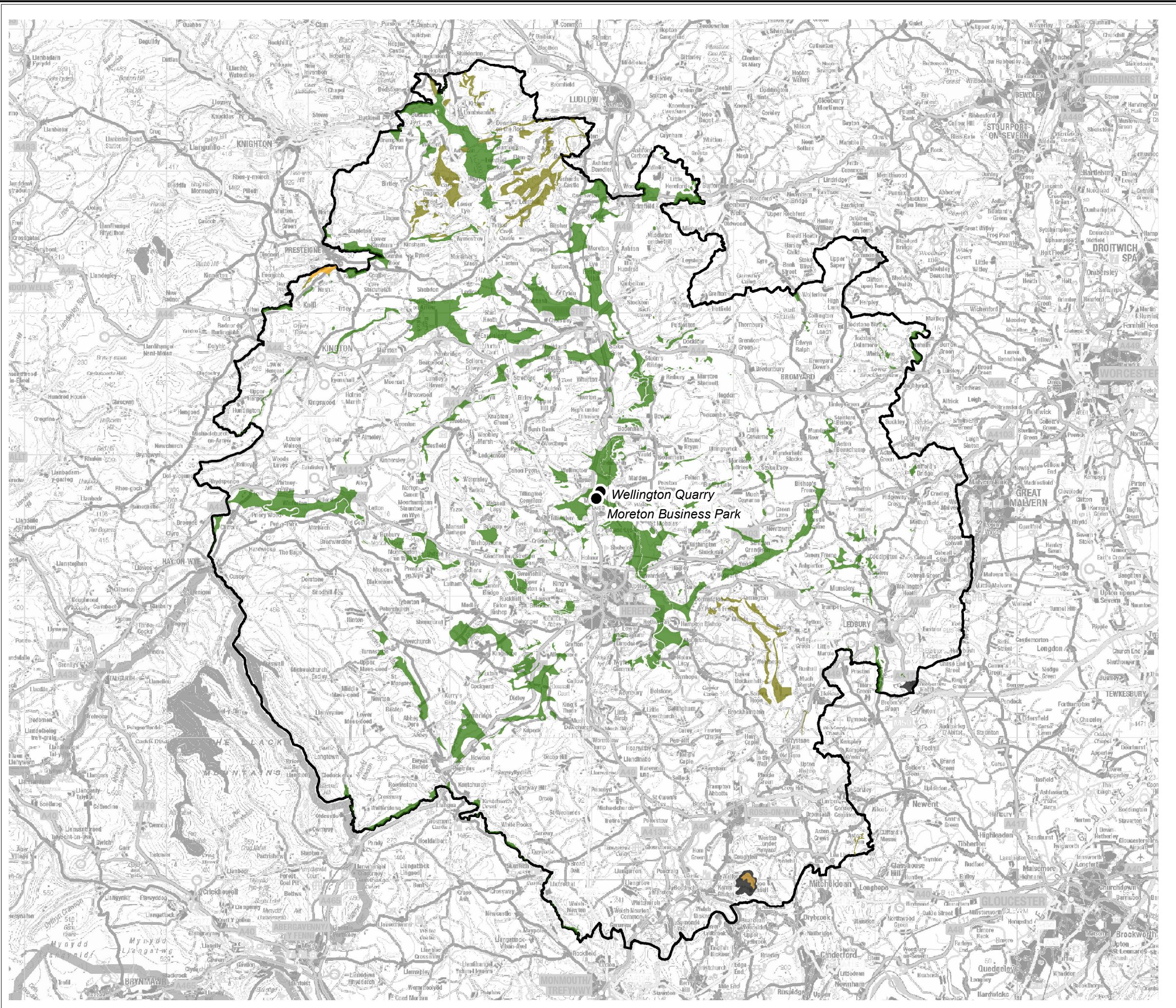


Herefordshire Minerals and Waste Local Plan

Figure 7
Minerals Safeguarded Areas
including Rail Heads



Mineral Reserves

- Brick clay
- Coal
- Limestone (including dolomite)
- Sandstone: Pre-Cambrian, Ordovician, Silurian Greywacke
- Superficial sand/gravel
- Rail Heads



SCALE
 1:260,000 @ A3

DATE
 23/03/2018

